



# Transportation Cartridges & Manifolds



## **SAE Encapsulated Cartridge**

*Meets Performance Requirements  
of D.O.T. FMVSS 571.106*

*Meets Dimensional Standards of  
SAE J2494-4 in 6061-T6 Aluminum*

*Eliminate the space and labor  
costs associated with pipe threads.*

*Weight Reduction*

*3 barb design*



## **Manifolds**

*Push to Connect Ports*

*Light Weight Body*

*O-ring Seal*







# Prestomac SAE Encapsulated Cartridges

MATERIALS OF CONSTRUCTION	
CARTRIDGE:	BRASS
TUBE SUPPORT:	BRASS
O-RING:	BUNA N

NOMENCLATURE	
EXAMPLE: PMTCE-4	ATTRIBUTE:
PMTCE	PRESTO SAE CARTRIDGE
4	1/4 TUBE SIZE

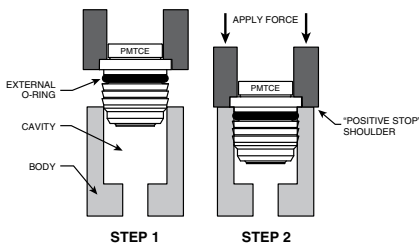
PRESSURE AND TEMPERATURE RANGE	
PRESSURE RANGE:	UP TO 250 PSI
TEMPERATURE RANGES:	-40° TO +200°F



The SAE Encapsulated cartridge allows the user to eliminate the space and labor required to install and assemble a conventional pipe thread fitting connection. The cartridge is retained in the cavity by 3 barbs versus the normal 2 barbs for better performance over a wider diameter tolerance range.

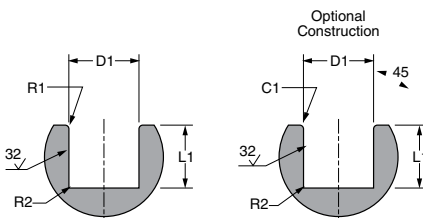
### Cavity Specifications

Dimensions are per the proposed SAE Standard J2494-4. The SAE Encapsulated Cartridge is thoroughly tested to meet or exceed the performance requirements of D.O.T. FMVSS 571.106 and SAE J2231 and the proposed dimensional standards of SAE J2494-4 in 6061-T6 aluminum. Cavity dimensions specified by SAE J2494-4 need to be adjusted slightly for optimum performance in material other than 6061-T6.



### Installation

Apply force evenly over the top surface of the cartridge body until the cartridge shoulder bottoms out on the top of the cavity. The amount of force required will vary depending on the cartridge size and the material of the cavity.

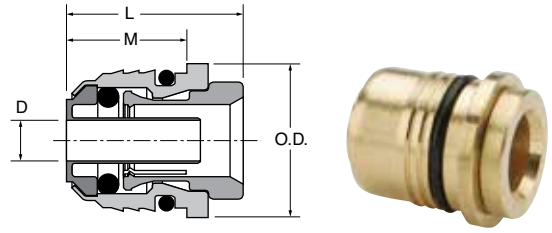


NOMINAL TUBE OD (IN)	D1 (MM) ±.05	D1 (IN) ±.002	L1 (MM) MIN	L1 (IN) MIN	R1 (MM) ±.05	R1 (IN) ±.002	R2 (MM) ±.05	R2 (IN) ±.002	C1 (MM) ±.05	C1 (IN) ±.002
5/32	8.8	0.346	11.4	0.45	0.5	0.02	0.5	0.02	0.5	0.02
1/4	12.8	0.504	12.7	0.5	0.5	0.02	0.5	0.02	0.5	0.02
3/8	16.5	0.65	16.5	0.65	0.5	0.02	0.5	0.02	0.5	0.02
1/2	19.7	0.775	19.8	0.78	0.5	0.02	0.5	0.02	0.5	0.02
5/8	23.5	0.925	22.4	0.88	0.8	0.03	0.5	0.02	0.8	0.03
3/4	27.1	1.067	23.9	0.94	0.8	0.03	0.5	0.02	0.8	0.03

Cavity material is to be 6061 T6 aluminum

**Prestomatic SAE Encapsulated Cartridge PMCE/PMTCE**

PART NO.	TUBE SIZE	CAVITY SIZE ±.002	L	M	O.D.	FLOW DIA. D
PMTCE-4	1/4	.504	.64	.44	.56	.140
PMTCE-4-8	1/4	.775	.66	.42	.87	.140
PMTCE-6	3/8	.650	.84	.64	.75	.217
PMTCE-6-8	3/8	.775	.84	.64	.87	.217
PMTCE-8	1/2	.775	.98	.77	.87	.338
PMTCE-10	5/8	.925	1.07	.86	1.00	.398

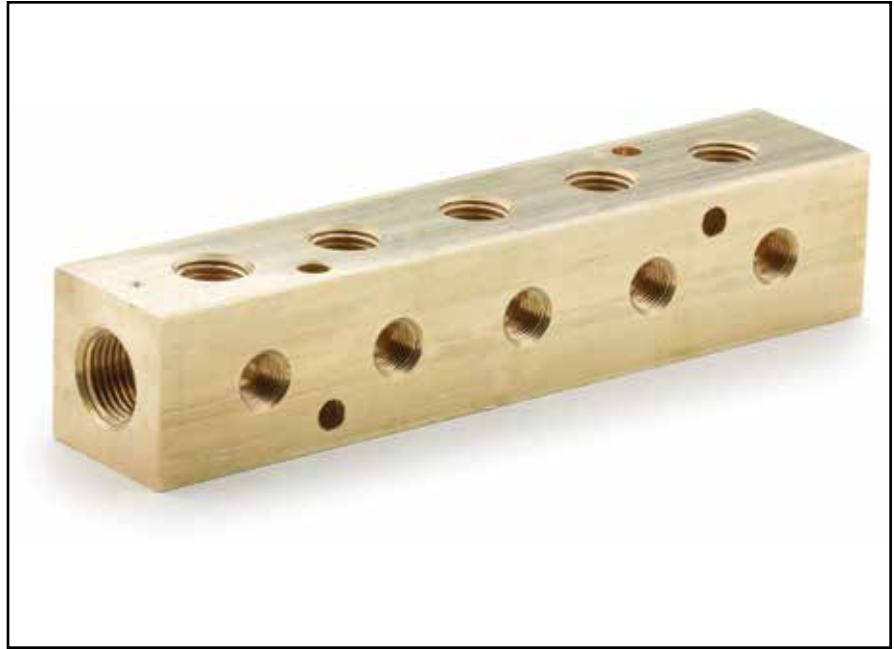




# Brass Manifold

NOMENCLATURE	
EXAMPLE: 255MP-6-4-2	ATTRIBUTE:
2	2 ENDS
5	5 TOP PORTS
5	5 SIDE PORTS
M	MANIFOLD
P	PIPE THREAD
6	3/8" END PORTS
4	1/4" TOP PORTS
2	1/8" SIDE PORTS

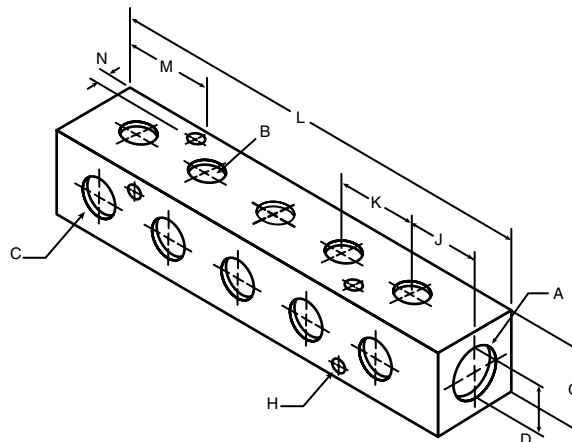
SPECIFICATIONS	
PRESSURE RANGE:	UP TO 1,000 PSI
TEMPERATURE RANGES:	-65° TO +250°F
OPERATING FLUID:	AIR, WATER, HYDRAULIC FLUIDS



This brass manifold provides a convenient junction for the hook-up of multi-branch distribution lines. Porting is easy with five 1/8" and five 1/4" side ports. Two 3/8" inlet ports allow for maximum flow.

## Brass Manifold 255M

PART NO.	PIPE THREAD A	PIPE THREAD B	PIPE THREAD C	G	MOUNTING HOLE DIA. H	J	K	L	M	N	D
255MP-6-4-2	3/8	1/8	1/4	1.25	.22	.88	1.13	6.25	1.45	.25	.25





# Presto Manifold

MATERIALS OF CONSTRUCTION	
MANIFOLD BODY:	GLASS FILLED NYLON
COLLET:	BRASS
O-RING:	BUNA N

NOMENCLATURE	
EXAMPLE: 24M-6-4	ATTRIBUTE:
24M	PRESTO MANIFOLD
6	INLET TUBE 6/16
4	OUTLET TUBE 4/16

SPECIFICATIONS	
PRESSURE RANGE:	UP TO 150 PSI
TEMPERATURE RANGES:	-40° TO +200°F

APPLICABLE TUBE	
TUBE MATERIAL:	NYLON, SAE J844 TYPE A & B NYLON TUBING
TUBE O.D.:	1/4, 3/8, 1/2



The Presto manifold provides a convenient junction to connect multiple tubing lines.

## Assembly Instructions

1. Cut tubing squarely with Parker tube cutter PTC-001. Be certain that Manifold ports are clean and free of debris.
2. Insert tubing into port until it bottoms. Pull on tubing to verify that it is properly retained in the manifold.
3. To disassemble, simply hold release button against the manifold body and remove the tubing.
4. To reassemble, make certain that the Manifold ports are clean and free of debris and lubricate leading end of the tubing with light oil or petroleum jelly.

## Presto Manifold 24M

PART NO.	TUBE O.D. INLET	TUBE O.D. OUTLET	A	B	D	G	H	M	M1	N
24M-4-4	1/4	1/4	1.33	3.98	.21	2.75	.53	.90	.88	.89
24M-6-4	3/8	1/4	1.33	4.00	.21	2.75	.53	.90	.88	.89
24M-6-6	3/8	3/8	1.65	6.49	.22	4.55	.60	1.02	1.02	1.33
24M-8-8	1/2	1/2	1.65	6.49	.22	4.55	.60	1.02	1.02	1.33
24M-8-6446	1/2	3/8 - 1/4	1.65	6.49	.22	4.55	.64	1.02	1.02	1.17

